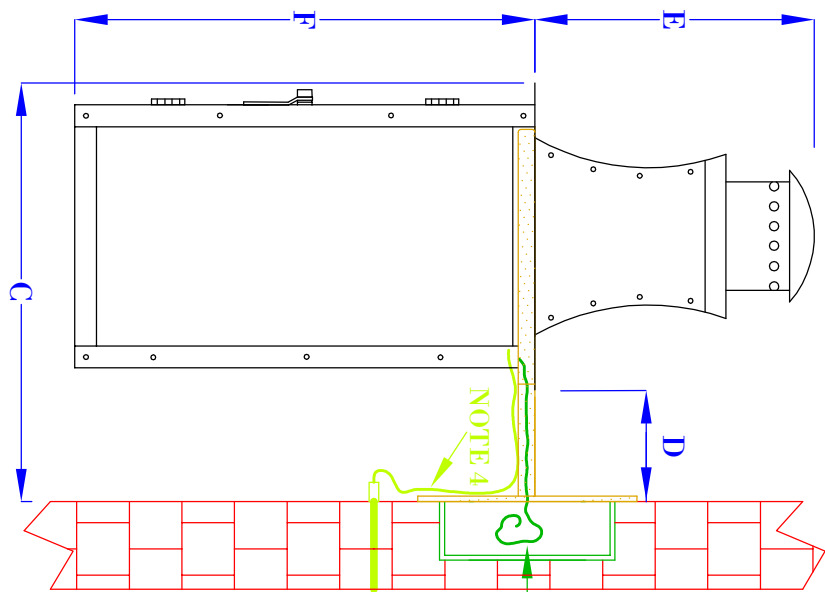
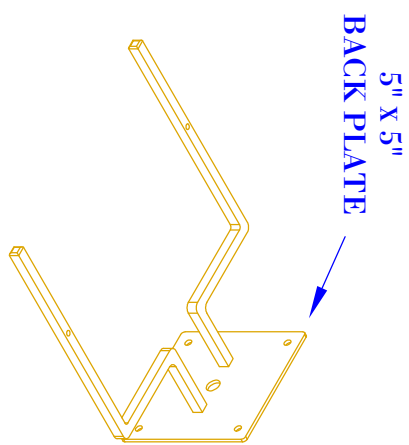


**FRONT VIEW**  
(NTS)



**SIDE VIEW**  
(NTS)



**ISO VIEW**  
(NTS-BRACKET ONLY)

**NOTES:**

1. MOUNTING HARDWARE SUPPLIED BY OTHERS
2. FIXTURES ARE HANDCRAFTED. DIMENSIONS MAY VARY PLUS OR MINUS  $\frac{1}{4}$ "
3. ELECTRIC LIGHTS SUPPLIED WITH 18/2 WIRE WITH GROUND
4. GAS LIGHTS SUPPLIED WITH  $\frac{3}{16}$ " COPPER GAS LINE AND  $\frac{3}{16}$ " x  $\frac{1}{4}$ " GAS LINE ADAPTOR

# BEVOLO GAS & ELECTRIC LIGHTS

**LIGHT:** GOVERNOR CARRIAGE LANTERN

**BRACKET:** BRACKET MOUNT

SIZE:	17"	21"	24"
A:	17"	21"	24"
B:	8 $\frac{1}{4}$ "	10 $\frac{1}{4}$ "	11 $\frac{1}{2}$ "
C:	9 $\frac{1}{2}$ "	11 $\frac{1}{2}$ "	12 $\frac{1}{2}$ "
D:	2 $\frac{1}{2}$ "	2 $\frac{1}{2}$ "	2 $\frac{1}{2}$ "
E:	6 $\frac{1}{2}$ "	8"	9"
F:	10 $\frac{1}{2}$ "	13"	15"

DATE:	8-24-22	DRW BY:	JJG	PROPERTY OF BEVOLO GAS AND ELECTRIC LIGHTS. NEITHER THE DRAWING NOR ITS CONTENT MAY BE COPIED, REPRODUCED, OR EDITED TO A LIKENESS WITHOUT THE WRITTEN CONSENT OF BEVOLO GAS AND ELECTRIC LIGHTS.
APP. BY:	JJG	REVISION:	2	