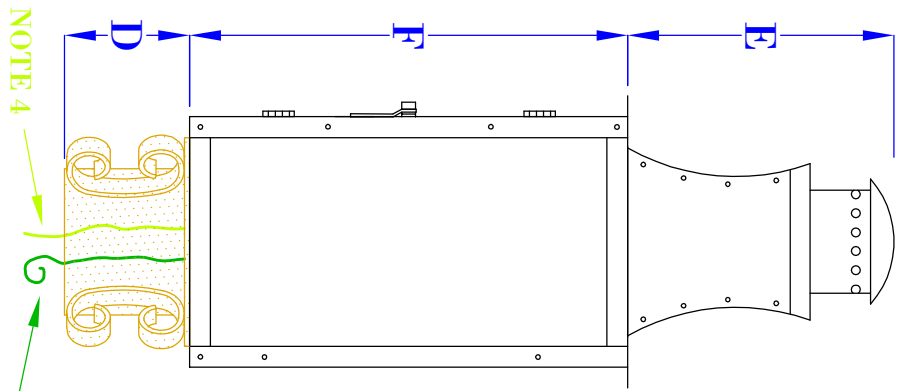
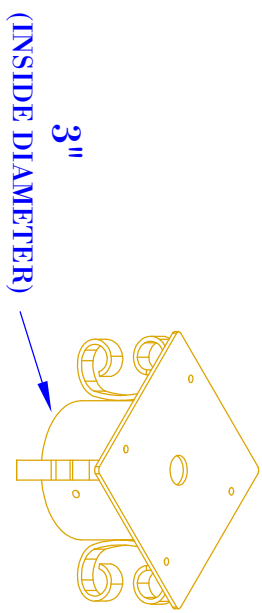


FRONT VIEW
(NTS)



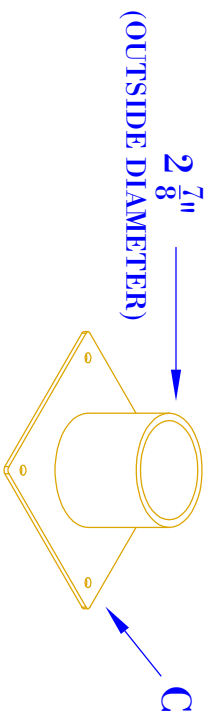
SIDE VIEW
(NTS)



(INSIDE DIAMETER)

ISOMETRIC VIEW-POST MOUNT

(NTS - BRACKET ONLY)



(OUTSIDE DIAMETER)

ISOMETRIC VIEW-COLUMN MOUNT ADAPTOR

(NTS - BRACKET ONLY)

- NOTES:**
1. MOUNTING HARDWARE SUPPLIED BY OTHERS
 2. FIXTURES ARE HANDCRAFTED. DIMENSIONS MAY VARY PLUS OR MINUS $\frac{1}{4}$ "
 3. ELECTRIC LIGHTS SUPPLIED WITH 18/2 WIRE WITH GROUND
 4. GAS LIGHTS SUPPLIED WITH $\frac{1}{4}$ " GAS NIPPLE AND $\frac{1}{8}$ " IP X $\frac{1}{4}$ " GAS LINE ADAPTOR

BEVOLO GAS & ELECTRIC LIGHTS

LIGHT: GOVERNOR CARRIAGE LANTERN

BRACKET: POST/COLUMN MOUNT

SIZE:	17"	21"	24"
A:	20"	24"	27"
B:	8 $\frac{1}{4}$ "	10 $\frac{1}{4}$ "	11 $\frac{1}{2}$ "
C:	5"X5"	5"X5"	5"X5"
D:	3"	3"	3"
E:	6 $\frac{1}{2}$ "	8"	9"
F:	10 $\frac{1}{2}$ "	13"	15"

DATE: 8-24-22
APP. BY: JJG
REVISION: 2

DRW BY: JJG
PROPERTY OF BEVOLO GAS AND ELECTRIC LIGHTS. NEITHER THE DRAWING NOR ITS CONTENT MAY BE COPIED, REPRODUCED, OR EDITED TO A LIKENESS WITHOUT THE WRITTEN CONSENT OF BEVOLO GAS AND ELECTRIC LIGHTS.