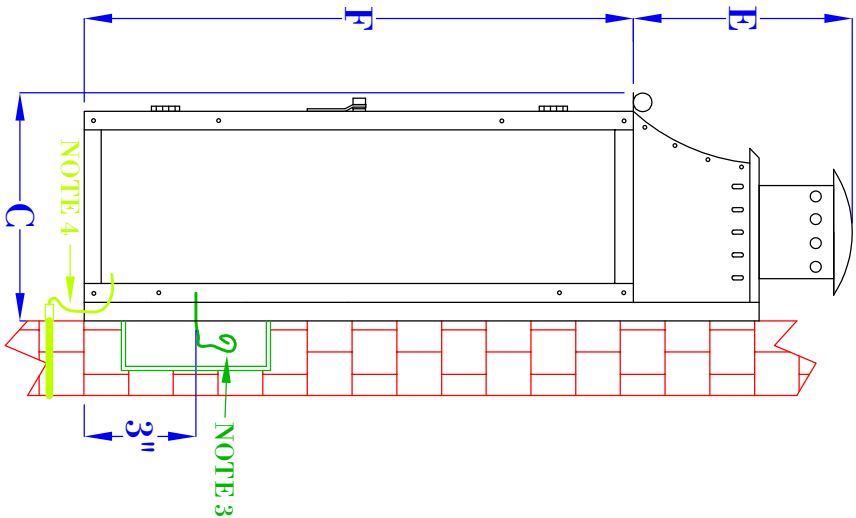


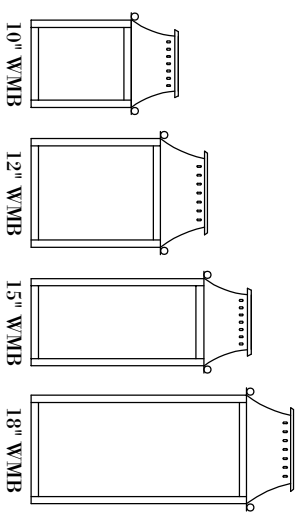
**FRONT VIEW**  
(18" VERSION SHOWN)



**SIDE VIEW**  
(18" VERSION SHOWN)

**FLUSH MOUNTED  
GAS FIXTURES  
CANNOT BE MOUNTED TO  
ANY COMBUSTIBLE  
MATERIALS INCLUDING  
WOOD, VINYL, PVC  
OR COMPOSITES**

**NOTE 5**



- NOTES:**
1. MOUNTING HARDWARE SUPPLIED BY OTHERS
  2. FIXTURES ARE HANDCRAFTED. DIMENSIONS MAY VARY PLUS OR MINUS  $\frac{1}{4}$ "
  3. ELECTRIC LIGHTS SUPPLIED WITH 18/2 WIRE WITH GROUND
  4. GAS LIGHTS SUPPLIED WITH  $\frac{3}{16}$ " COPPER GAS LINE AND  $\frac{3}{16}$ " x  $\frac{1}{4}$ " GAS LINE ADAPTOR
  5. PROPORTIONS FOR EACH SIZE CHANGE. 18" IS REPRESENTED ABOVE, THUMBNAILS TO THE RIGHT SHOW ALL FOR COMPARISON
  6. 10", 12" SIZES ARE NOT SOLD IN GAS

# BEVOLO GAS & ELECTRIC LIGHTS

<b>LIGHT:</b>	<b>WILLIAMSBURG W/ STACK 10", 12", 15", 18"</b>
<b>BRACKET:</b>	<b>FLUSH MOUNT</b>

SIZE:	10"	12"	15"	18"
A:	12 $\frac{1}{4}$ "	14 $\frac{5}{8}$ "	17 $\frac{1}{4}$ "	20 $\frac{5}{8}$ "
B:	7 $\frac{1}{4}$ "	8 $\frac{3}{4}$ "	7 $\frac{1}{4}$ "	8 $\frac{3}{4}$ "
C:	5 $\frac{1}{4}$ "	6"	5 $\frac{1}{4}$ "	6"
E:	5 $\frac{3}{8}$ "	5 $\frac{3}{4}$ "	5 $\frac{3}{8}$ "	5 $\frac{3}{4}$ "
F:	6 $\frac{7}{8}$ "	8 $\frac{7}{8}$ "	11 $\frac{7}{8}$ "	14 $\frac{7}{8}$ "

<b>DATE:</b>	<b>APP. BY:</b>	<b>DRW BY:</b>
2-2-22	JJG	JJG
<b>REVISION:</b>	<b>5</b>	

COPYRIGHT 2022, BEVOLO GAS & ELECTRIC LIGHTS, DRAWINGS & DESIGNS ARE OWNED BY BEVOLO AND REMAIN THE SOLE AND EXCLUSIVE PROPERTY OF BEVOLO GAS & ELECTRIC LIGHTS. DRAWINGS AND DESIGNS SHALL NOT BE DUPLICATED IN WHOLE OR PART.