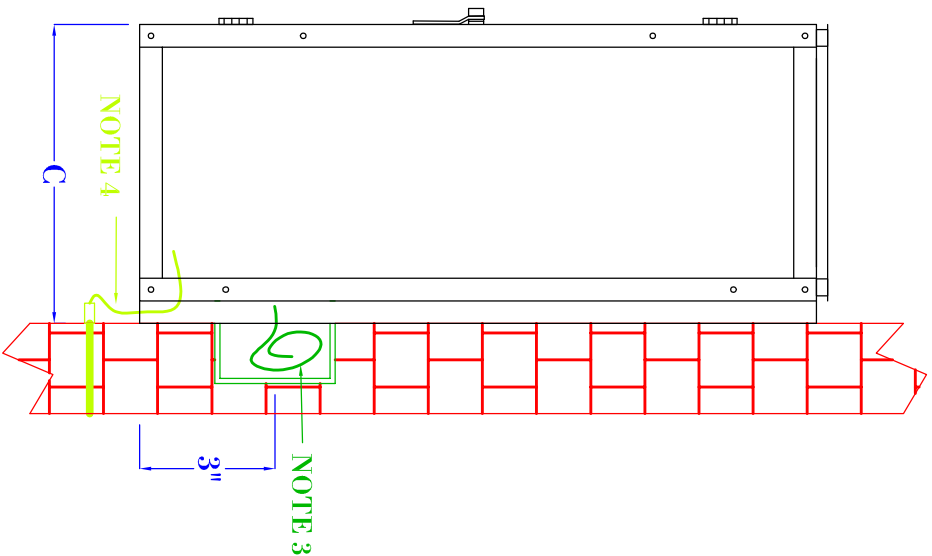


FRONT VIEW
(NTS)



SIDE VIEW
(NTS)

- NOTES:**
1. MOUNTING HARDWARE SUPPLIED BY OTHERS
 2. FIXTURES ARE HANDCRAFTED. DIMENSIONS MAY VARY PLUS OR MINUS $\frac{1}{4}$ "
 3. ELECTRIC LIGHTS SUPPLIED WITH 18/2 WIRE WITH GROUND
 4. GAS LIGHTS SUPPLIED WITH $\frac{3}{16}$ " COPPER GAS LINE AND $\frac{3}{8}$ " X $\frac{1}{4}$ " GAS LINE ADAPTOR

BEVOLO GAS & ELECTRIC LIGHTS

LIGHT:	MODERNIST
BRACKET:	FLUSH MOUNT

SIZE:	15"	19"	23"	27"
A:	15 $\frac{1}{4}$ "	19"	22 $\frac{3}{4}$ "	27"
B:	6"	7 $\frac{1}{2}$ "	9"	10 $\frac{7}{8}$ "
C:	6 $\frac{1}{2}$ "	8"	9 $\frac{1}{2}$ "	11 $\frac{1}{8}$ "

DATE:	1-28-15	DRW BY:	JJG	COPYRIGHT 2015, BEVOLO GAS & ELECTRIC LIGHTS. THIS DRAWING AND ANY DESIGN OR DATA CONTAINED THEREIN ARE CONSIDERED PROPERTY OF BEVOLO GAS AND ELECTRIC LIGHTS. NEITHER THE DRAWING NOR ITS CONTENT MAY BE COPIED, REPRODUCED, OR EDITED TO A LIKENESS WITHOUT THE WRITTEN CONSENT OF BEVOLO GAS AND ELECTRIC LIGHTS.
APP. BY:	MAJ	REVISION:	1	