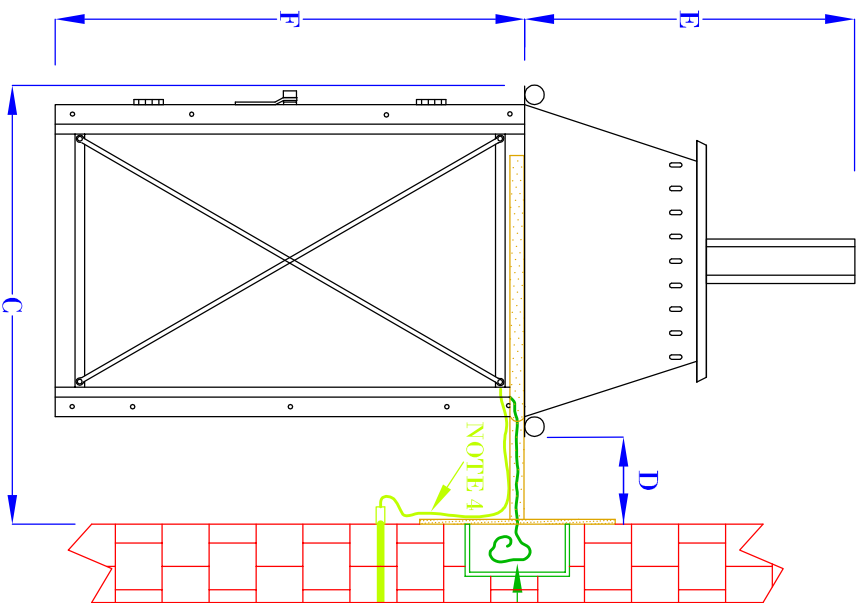


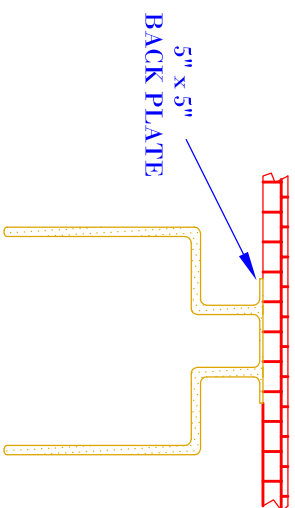
FRONT VIEW

(NTS)



SIDE VIEW

(NTS)



TOP VIEW

(NTS- BRACKET ONLY)

- NOTES:
1. MOUNTING HARDWARE SUPPLIED BY OTHERS
 2. FIXTURES ARE HANDCRAFTED. DIMENSIONS MAY VARY PLUS OR MINUS $\frac{1}{4}$ "
 3. ELECTRIC LIGHTS SUPPLIED WITH 18/2 WIRE WITH GROUND
 4. GAS LIGHTS SUPPLIED WITH $\frac{3}{16}$ " COPPER GAS LINE AND $\frac{3}{16}$ " x $\frac{1}{4}$ " GAS LINE ADAPTOR

SIZE:	14"	16"	18"	22"
A:	18"	20"	21"	26"
B:	10 $\frac{1}{8}$ "	10 $\frac{1}{8}$ "	8 $\frac{3}{4}$ "	10 $\frac{1}{8}$ "
C:	11 $\frac{5}{8}$ "	11 $\frac{5}{8}$ "	10 $\frac{1}{8}$ "	11 $\frac{5}{8}$ "
D:	2 $\frac{1}{2}$ "	2 $\frac{1}{2}$ "	2 $\frac{1}{2}$ "	2 $\frac{1}{2}$ "
E:	8"	8"	6 $\frac{1}{4}$ "	8"
F:	10 $\frac{1}{8}$ "	12 $\frac{1}{8}$ "	14 $\frac{3}{4}$ "	18 $\frac{1}{8}$ "

BEVULO GAS & ELECTRIC LIGHTS

LIGHT:

COACH HOUSE

BRACKET:

BRACKET MOUNT

DATE:	DRW BY:	JJG
08-5-10	APP. BY:	MAJ
REVISION:		2

COPYRIGHT 2009, BEVULO GAS & ELECTRIC LIGHTS. DRAWINGS & DESIGNS ARE OWNED BY BEVULO AND REMAIN THE SOLE AND EXCLUSIVE PROPERTY OF BEVULO GAS & ELECTRIC LIGHTS. DRAWINGS AND DESIGNS SHALL NOT BE DUPLICATED IN WHOLE OR PART.